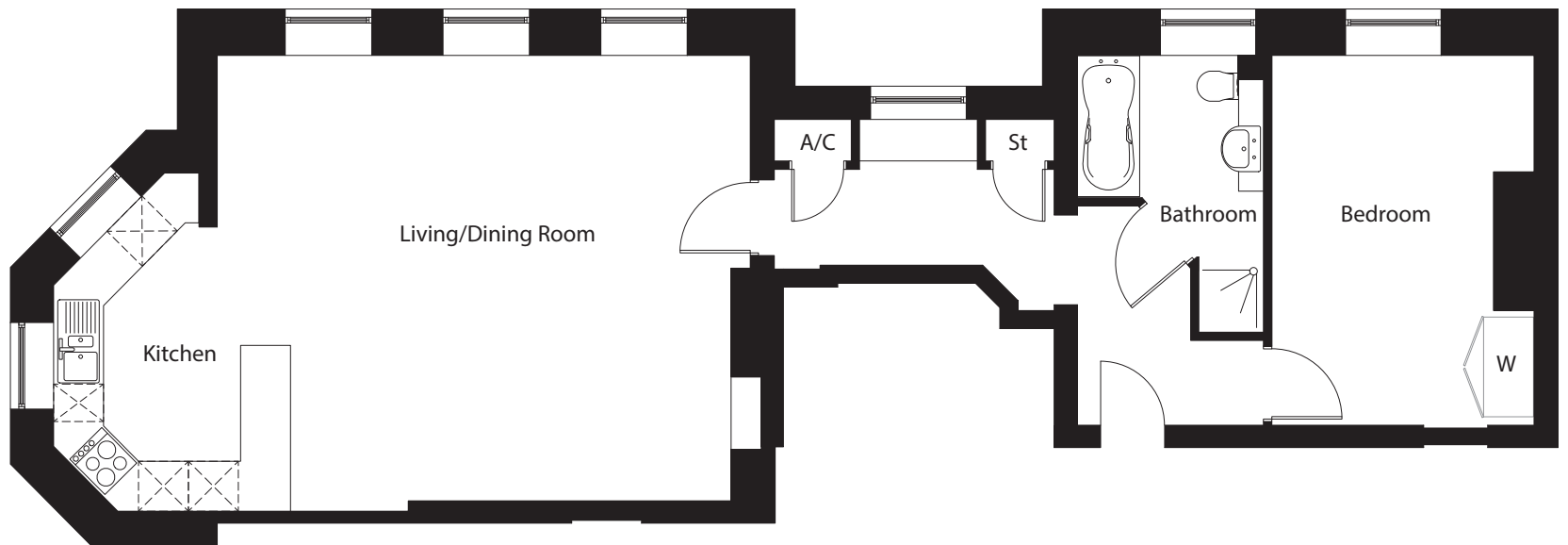


## Apartment 3



### Features:

- A spacious apartment located on the lower ground floor within the Grade II listed building
- Contemporary bathroom
- Thoughtfully designed fully integrated modern kitchen
- Stylish built-in wardrobe
- Incredibly spacious living and dining room
- Contemporary and quirky kitchen with breakfast bar
- Statement high ceilings
- Hand-crafted sash windows
- Feature fireplace and surround
- Carefully selected, sumptuously thick carpets

Living/Dining Room - 6.41m x 5.50m	21' 0" x 18' 0"
Kitchen - 4.07m x 3.01m	13' 4" x 9' 10"
Bedroom - 4.45m x 3.08m	14' 7" x 10' 1"
Bathroom - 3.33m x 2.29m	10' 11" x 7' 6"