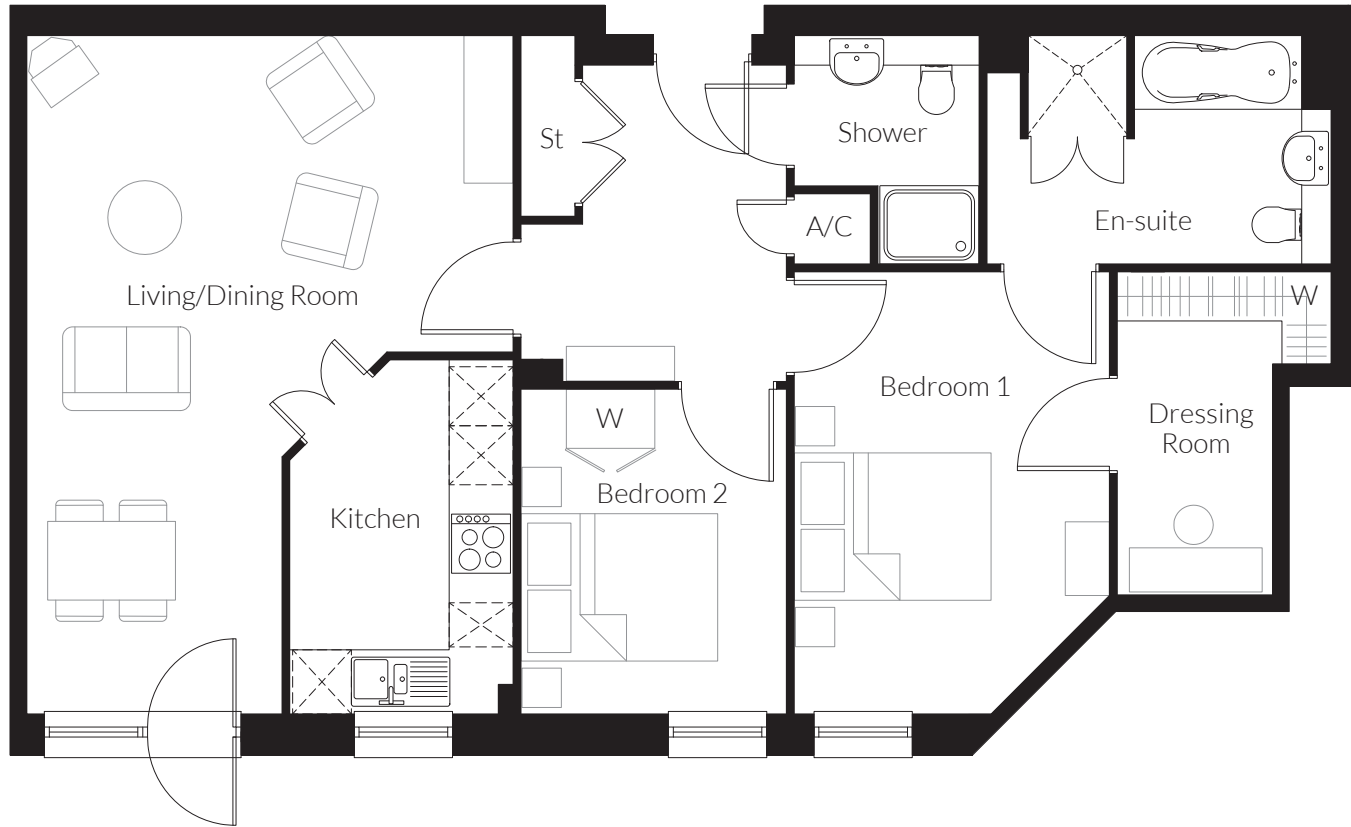


Apartment 28



Living/Dining Room - 6.90m (max) x 4.95m (max)	22' 7" x 14' 8"
Kitchen - 3.59m x 2.29m	11' 7" x 7' 6"
Bedroom 1 - 4.47m (max) x 3.21m (max)	14' 7" x 10' 6"
Dressing Room - 2.16m (max) x 1.59m (max)	7' 1" (max) x 5' 2" (max)
En-suite - 3.51m (max) x 2.34m	11' 6" x 7' 8"
Bedroom 2 - 3.29m x 2.69m	10' 9" x 8' 9"
Guest Shower - 2.33m x 1.86m	7' 7" x 6' 1"

Features:

- Prime locations within the New Build aspect
- Modern and inviting en-suite to master bedroom with separate bath and shower
- Separate shower room
- Spacious and airy open-plan living and dining room, with adjoining contemporary kitchen
- Modern and inviting bathroom
- Private glazed balcony
- Carefully selected, sumptuously thick carpets
- Walk in dressing room to master bedroom