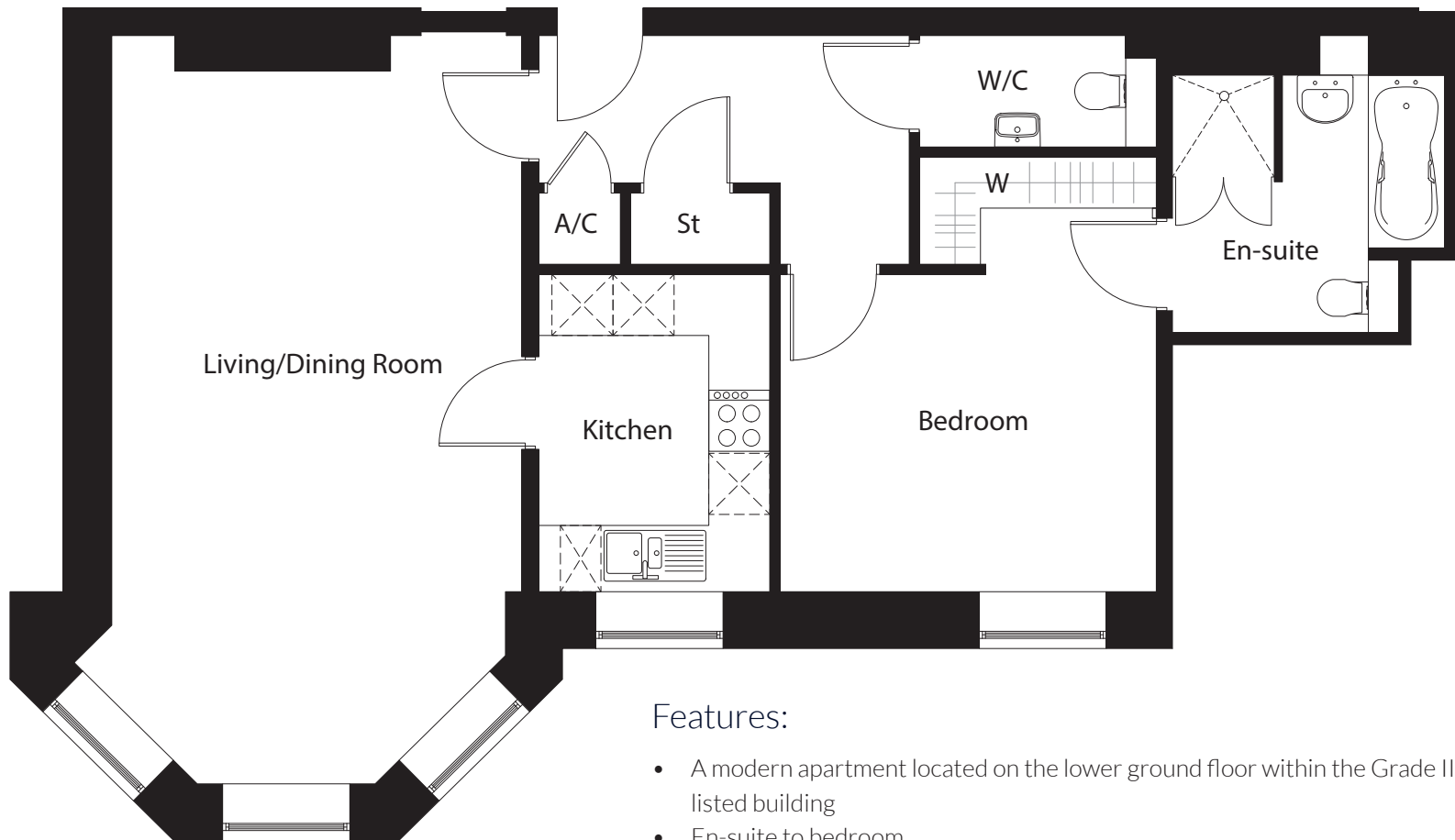


## Apartment 1



### Features:

- A modern apartment located on the lower ground floor within the Grade II listed building
- En-suite to bedroom
- Open-plan living and dining room, with beautiful original bay windows looking out onto New Court's manicured grounds
- Contemporary fully integrated kitchen
- Statement high ceilings
- Modern and inviting bathroom
- Stylish built-in wardrobe
- Hand-crafted sash windows
- Feature fireplace and surround
- Carefully selected, sumptuously thick carpets
- Separate cloakroom

|                                    |                  |
|------------------------------------|------------------|
| Living/Dining Room - 7.34m x 4.03m | 24' 0" x 13' 2"  |
| Kitchen - 3.11m x 2.29m (max)      | 10' 2" x 7' 6"   |
| Bedroom - 3.69m x 3.13m            | 12' 10" x 10' 2" |
| En-suite - 2.78m x 2.62m           | 9' 12" x 8' 5"   |